



Life ACCLIMA

Joris De Nies - Coordinator Life Aclima

LIFE Platform meeting
3-4 December 2025, Bologna





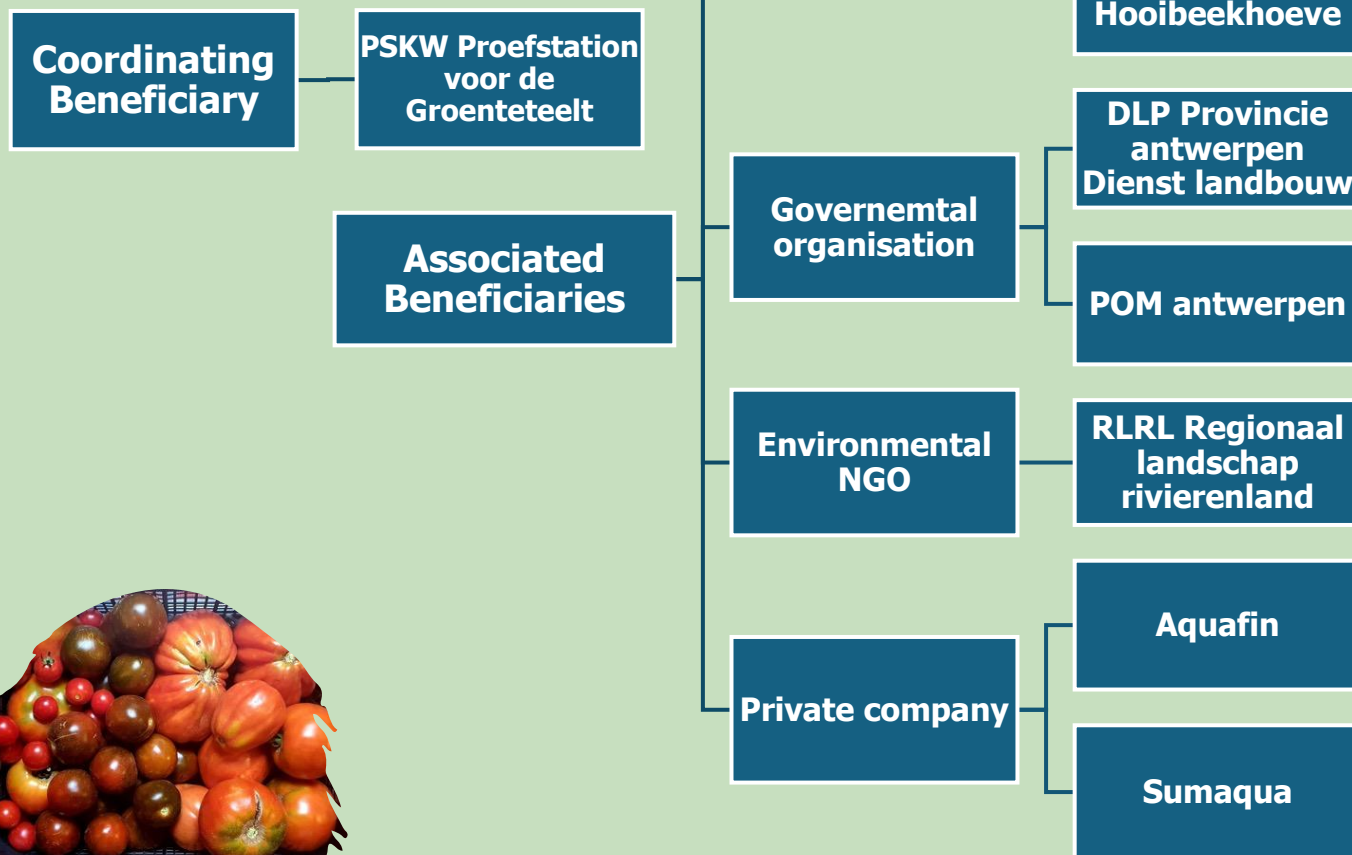
Climate change, impact on agricultural water availability

- More (evapo)transpiration
- Lower water quality
- Extreme rainfall (no infiltration)
- Limited storage capacity





Partners & location

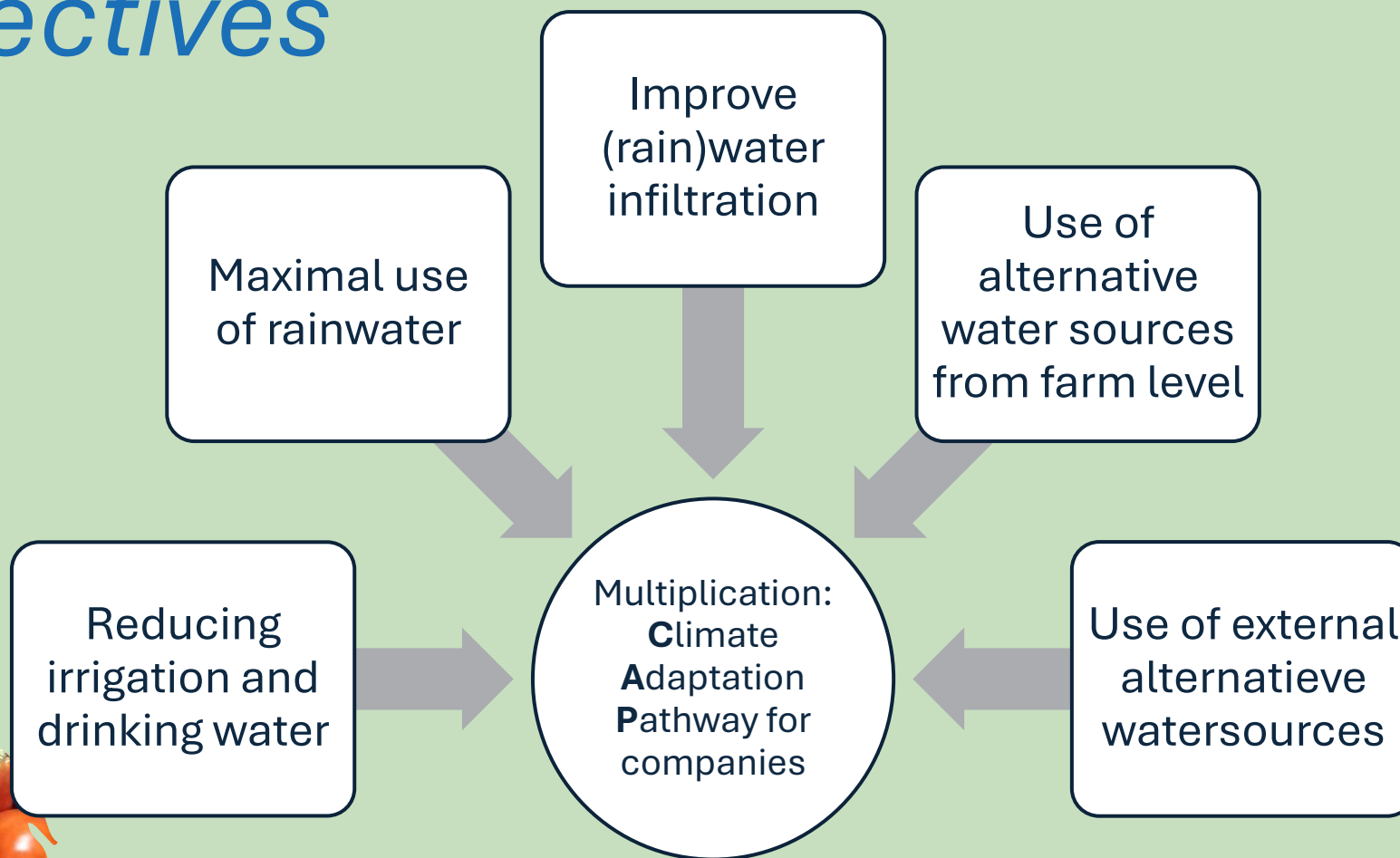




dairy cattle - soft fruit – vegetables - poultry



Objectives



LIFE Platform meeting
3-4 December 2025, Bologna



CAP: To make a real impact

4 STEPS

- **Audit:** scoring how farm scores at five pillars = 'water-footprint'
- **Identification climate adaptation actions:** overview and selection of actions
- **Climate adaptation traject:** modest – intensive or very intensive support
- **Monitoring** impact climate adaptation trajectories





So everything is running smoothly? Why are some good solutions not always working in the field?

Workshop 14/11/2025

Workshop with technology providers / advisors

Outcome: Identify barriers

Technical challenges

Regulatory challenges

Financial challenges



LIFE Platform meeting
3-4 December 2025, Bologna





Some examples



Regulatory challenges:

Water Streams vs. Manure Legislation

- Rinse water from poultry houses is considered as slurry: permit is required but purification is considered as a manure-processing technology.

Exchange of Different Water Streams

- Complex and expensive risk analyses are required.
- Reclaimed water: EU Regulation sets minimum requirements for agricultural water reuse, focusing on pathogens, while the Flemish Decision introduces detailed guidance for environmental risk assessment of micropollutants

Controlled Drainage

- Legislation makes it difficult to convert classical drainage systems into controlled drainage due to notification requirements and uncertainty about the consequences of such notifications.





Some examples



Financial challenges:

High Costs of Water Treatment and Reuse

- Treatment technologies are expensive; cost cannot be passed on to end user.
- Small volumes make investments less profitable.

Insufficient funding from Flemish Agricultural Investment Fund (VLIF)

- Innovative techniques often fall outside VLIF regulations.
- A permit is required to receive support → this slows down innovation.



LIFE Platform meeting
3-4 December 2025, Bologna



Next steps?



Workshop with policy stakeholders Feb 2026

Flemish and local public authorities in water, manure management, land use, and investment funding

Quick wins and develop long-term solutions



LIFE Platform meeting
3-4 December 2025, Bologna

Tips & tricks welcome ;-)



“Real progress isn’t made next to each other, but with each other.”



LIFE Platform meeting
3-4 December 2025, Bologna

Joris De Nies